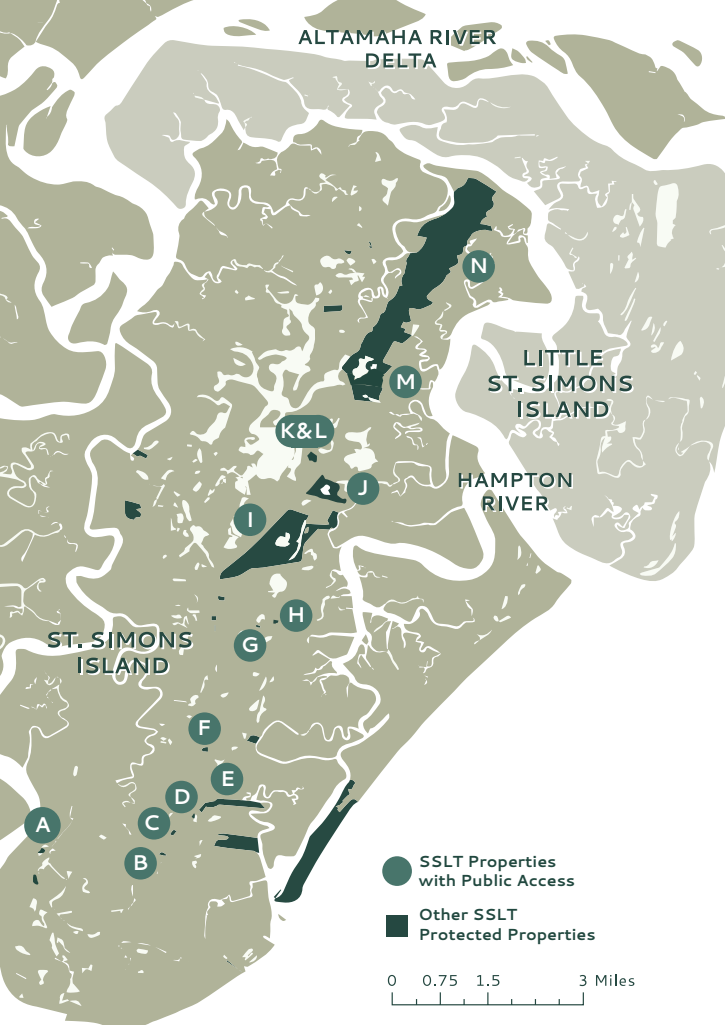


ST. SIMONS LAND TRUST

*PASSPORT*  
TO  
PRESERVATION





# LAND TRUST PROPERTIES

*This Passport Belongs to:*

*(Write your name here.)*

- A  Gateway Property
- B  St. Simons Land Trust Office
- C  Mildred Huie Property
- D  Old Ironsides Property
- E  John Gilbert Nature Trail
- F  Old Stables Corner
- G  Historic Harrington School\*
- H  Spears Preserve at Harrington
- I  Guale Preserve
- J  Sinclair Preserve
- K  Frederica Park\*
- L  Alice Richards Botanical Trail\*
- M  Correll Trail at Oatland
- N  Cannon's Point Preserve

\*Partner Properties

# WHAT IS A BARRIER ISLAND?

St. Simons Island is one of fourteen barrier islands along Georgia's coast. All these sandy islands have been built up by waves, currents, and winds and help protect the mainland from storms, sea level rise, and other powerful forces of the ocean. On these pages, you'll find the different layers of a maritime forest on a barrier island and the plants and birds that live in each.

## ABOVE CANOPY

**Birds:** Vultures, Hawks, Swallows, Swifts, Eagles

## CANOPY

**Birds:** Owls, Woodpeckers, Tanagers, Warblers, Buntings  
**Plants:** Hickories, Pines, Oaks, Cedars, Magnolias

## MIDSTORY

**Birds:** Warblers, Jays, Vireos, Cardinals, Chickadees, Kinglets  
**Plants:** Maples, Sweetgums, Hackberries, Palms, American Holly

## UNDERSTORY

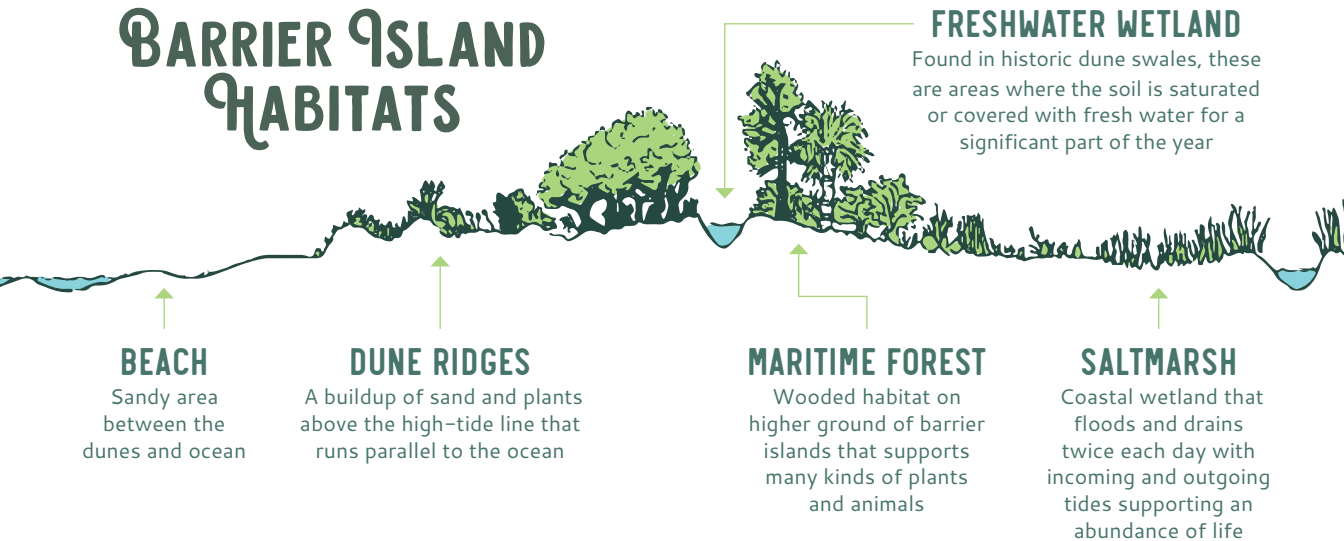
**Birds:** Mockingbirds, Bluebirds, Wrens, Doves  
**Plants:** Wax Myrtles, Saw Palmettos, Beautyberry, Yaupon Holly, Fetterbush, Blueberries

## GROUND COVER

**Birds:** Sparrows, Shorebirds, Waterfowl, Red-Winged Blackbirds, Rails  
**Plants:** Bluestems, Ferns, Asters



# BARRIER ISLAND HABITATS



## BEACH

Sandy area between the dunes and ocean

## DUNE RIDGES

A buildup of sand and plants above the high-tide line that runs parallel to the ocean

## MARITIME FOREST

Wooded habitat on higher ground of barrier islands that supports many kinds of plants and animals

## SALTMARSH

Coastal wetland that floods and drains twice each day with incoming and outgoing tides supporting an abundance of life

## FRESHWATER WETLAND

Found in historic dune swales, these are areas where the soil is saturated or covered with fresh water for a significant part of the year

## Questions for Further Learning:

### 1 What do barrier islands protect?

Barrier islands protect the mainland from the effects of the ocean.

### 2 Do Georgia's saltmarshes contain more freshwater or more saltwater? Saltmarshes contain more saltwater than freshwater.

### 3 What kinds of plants might you find in a maritime forest?

In a maritime forest, you can find different species of oaks, palms, pines, mushrooms, Spanish moss, and more!

### 4 Why are wetlands important to barrier islands?

Freshwater wetlands are a critical, but limited resource. Saltmarshes are a nursery for an abundance of native wildlife.

# ST. SIMONS LAND TRUST PROTECTED PROPERTIES

On the next few pages, you will find important information about Land Trust protected properties including address, acreage, miles of trails, whether the property is pet-friendly, and hours of operation. Please check our website for the most updated information about each property.

## GATEWAY PROPERTY

-  901 ARTHUR J. MOORE DR.
-  ACREAGE: 9.68
-  DOG FRIENDLY
-  OPEN: Daily, Sunrise to Sunset



## ST. SIMONS LAND TRUST OFFICE

-  1810 FREDERICA RD.
-  ACREAGE: 1.42
-  DOG FRIENDLY
-  OPEN: Mon – Fri,  
9AM – 5PM



## MILDRED HUIE PROPERTY

-  1819 FREDERICA RD.
-  ACREAGE: .56
-  DOG FRIENDLY
-  OPEN: Daily, Sunrise to Sunset



## OLD IRONSIDES PROPERTY

-  2404 FREDERICA RD.
-  ACREAGE: .85
-  DOG FRIENDLY
-  OPEN: Daily, Sunrise to Sunset



## OLD STABLES CORNER

-  11 MARKET ST.
-  ACREAGE: 2.3
-  DOG FRIENDLY
-  OPEN: Daily, Sunrise to Sunset



## JOHN GILBERT NATURE TRAIL

- 📍 2470 FREDERICA RD.
- 🌳 ACREAGE: 40
- 🚶 TRAILS: 0.26 Miles
- 🐕 DOG FRIENDLY
- 🕒 OPEN: Daily, Sunrise to Sunset



## ALICE RICHARDS BOTANICAL TRAIL

- 📍 2201 LAWRENCE RD.
- 🌳 ACREAGE: 20
- 🚶 TRAILS: 1 Mile
- 🐕 DOG FRIENDLY
- 🕒 OPEN: Daily, Sunrise to Sunset

PARTNER PROPERTY



## HISTORIC HARRINGTON SCHOOL

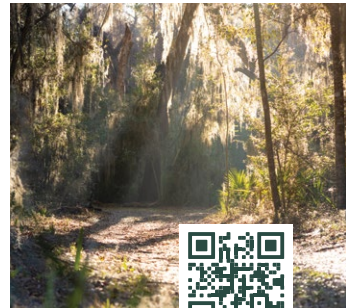
- 📍 291 SOUTH HARRINGTON RD.
- 🌳 ACREAGE: 12
- 🚶 TRAILS: 0.44 Miles
- 🐕 DOG FRIENDLY
- 🕒 OPEN: Tue - Fri, 10AM - 2PM

PARTNER PROPERTY



## CORRELL TRAIL AT OATLAND

- 📍 3100 LAWRENCE RD.
- 🌳 ACREAGE: 40.7
- 🚶 TRAILS: 0.7 Miles
- 🐕 DOG FRIENDLY
- 🕒 OPEN: Daily, Sunrise to Sunset



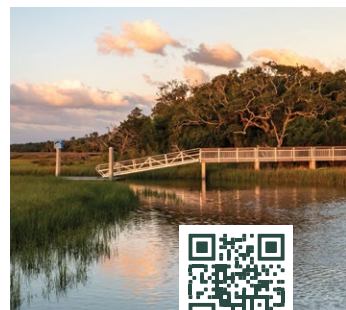
## GAULE PRESERVE

- 📍 110 LAWRENCE RD.
- 🌳 ACREAGE: 258
- 🚶 TRAILS: 2.9 Miles
- 🐕 TRAINED SERVICE DOGS ONLY
- 🕒 OPEN: Daily, 7AM - 5PM



## CANNON'S POINT PRESERVE

- 📍 560 CANNON'S POINT DR.
- 🌳 ACREAGE: 644
- 🚶 TRAILS: 11 Miles
- 🐕 TRAINED SERVICE DOGS ONLY
- 🕒 OPEN: Sat - Mon, 9AM - 3PM



# BARRIER ISLAND SCAVENGER HUNT

How many of the following plants and animals can you find? Check the box once found!

TAKE  
ONLY  
PICTURES

LEAVE

ONLY

FOOT

PRINTS



CRAB



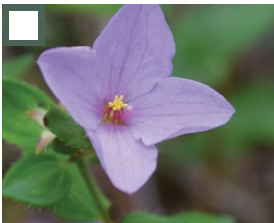
OYSTER SHELLS



MUSHROOM



KNOBBED WHELK



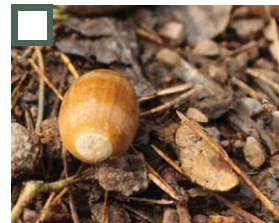
FLOWER



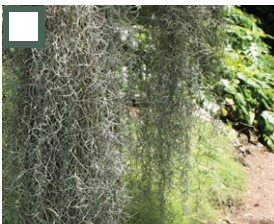
PINECONE



FEATHER



ACORN



SPANISH MOSS



RESURRECTION FERN



CRAB HOLE



LEAF

# NATIVE BIRDS ON ST. SIMONS ISLAND

How many of the following plants and animals can you find? Check the box once found!

TAKE  
ONLY  
PICTURES

LEAVE

ONLY

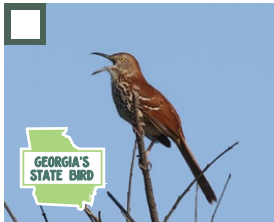
FOOT

PRINTS

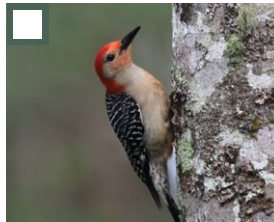
*Backyard Birds*



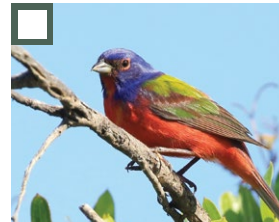
NORTHERN CARDINAL



BROWN THRASHER



RED-BELLIED  
WOODPECKER

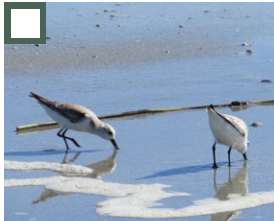


PAINTED BUNTING

*Beach Birds*



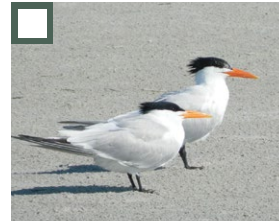
BROWN PELICAN



SANDERLING

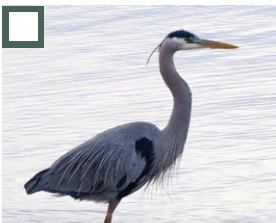


LAUGHING GULL



ROYAL TERN

*Marsh Birds*



GREAT BLUE HERON



GREAT EGRET



GREEN HERON



ROSEATE SPOONBILL

# NATIVE PLANTS ON ST. SIMONS ISLAND

How many of the following plants and animals can you find? Check the box once found!

TAKE  
ONLY  
PICTURES

LEAVE

ONLY

FOOT

PRINTS

Canopy



LIVE OAK



MAGNOLIA



PINE



HICKORY

Midstory



REDBUD



SPARKLEBERRY



HORSE SUGAR



DOGWOOD

Understory



HIBISCUS



SAW PALMETTO



REINDEER MOSS



AZALEA

# NATIVE WILDLIFE ON ST. SIMONS ISLAND

How many of the following plants and animals can you find? Check the box once found!

TAKE  
ONLY  
PICTURES

LEAVE

ONLY

FOOT

PRINTS

*Mammals*



MARSH RABBIT



RACCOON



WHITE-TAILED DEER



BAT

*Amphibians  
& Reptiles*



GREEN TREE FROG



SNAKE



TURTLE

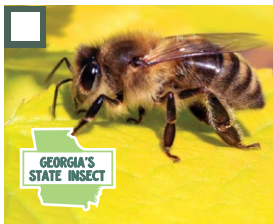


LIZARD

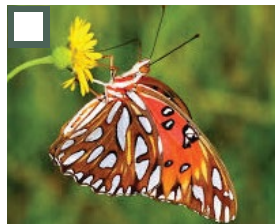
*Insects & Spiders*



MOSQUITO



HONEYBEE



BUTTERFLY



SPIDER

# NATURE LOG

DATE: \_\_\_\_\_ WEATHER: ☀️ ☁️ 🌧️

LOCATION: \_\_\_\_\_

WILDLIFE I SAW: \_\_\_\_\_

PLANTS I SAW: \_\_\_\_\_

SOUNDS I HEARD: \_\_\_\_\_

DRAWING:

DATE: \_\_\_\_\_ WEATHER: ☀️ ☁️ 🌧️

LOCATION: \_\_\_\_\_

WILDLIFE I SAW: \_\_\_\_\_

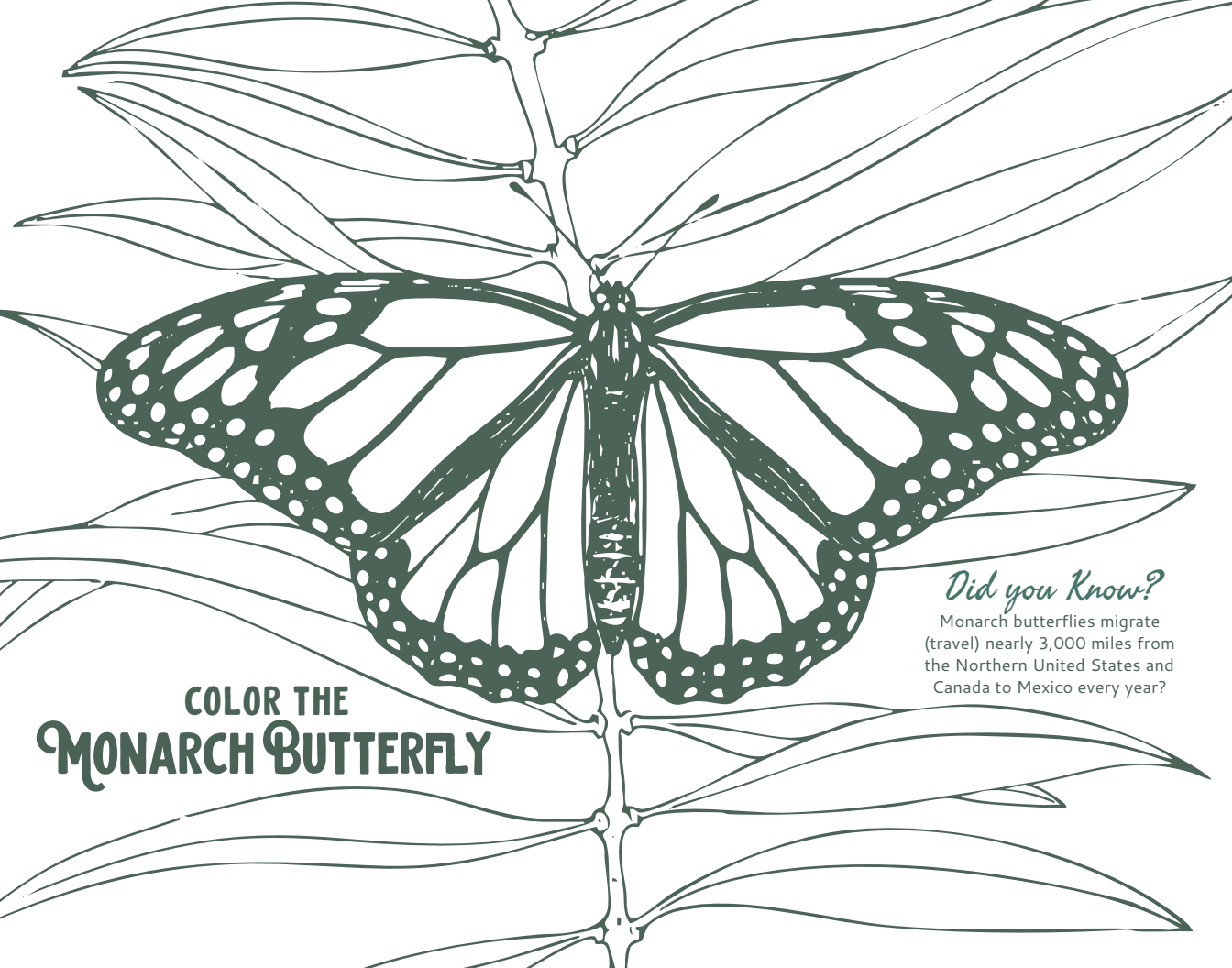
PLANTS I SAW: \_\_\_\_\_

SOUNDS I HEARD: \_\_\_\_\_

DRAWING:

## *Did you Know?*

The great naturalist **William Bartram** often made notes and drawings of rare plants and animals, shells, feathers, and rocks he saw on hikes. He pulled this information from his nature logs when he wrote his many books.



COLOR THE  
**MONARCH BUTTERFLY**

*Did you Know?*

Monarch butterflies migrate (travel) nearly 3,000 miles from the Northern United States and Canada to Mexico every year?

# GLOSSARY

**ACORN:** The seed or “fruit” of an oak tree

---

**AMPHIBIAN:** A cold-blooded vertebrate (has a backbone) that breathes underwater with gills when it's a tadpole (larval stage), but as an adult frog or toad breathes with lungs, just like you

---

**DUNE RIDGE:** A wind-formed sand ridge that parallels a beach or shore, formed by the accumulation of sand blown inland from the beach

---

**DUNE SWALE:** A low, moist area or depression between dunes, often acting as a wetland or marshy area

---

**ENDANGERED:** An animal or plant species seriously at risk of extinction

---

**EXTINCT:** An animal or plant no longer in existence

---

**HAMMOCK:** A slightly elevated area within our saltmarsh that serves as a haven for different native species

---

**INSECT:** A small invertebrate animal (no backbone) that has six legs and generally one or two pairs of wings

---

**MAINLAND:** A large mass of land that isn't an island (for example, the city of Brunswick is on the mainland)

---

**MAMMAL:** A warm-blooded animal that, like amphibians, has a backbone but also has hair or fur and the mothers provide milk to their babies, just like humans do

---

**NATIVE:** An animal or plant occurring naturally in a particular place

---

**POLLINATOR:** Birds, insects, and other animals that move pollen from one flower to another to bring about fertilization

---

**PRESERVATION:** Maintaining something in its original or existing state

---

**REPTILE:** Another animal with a backbone that has dry, scaly skin (or scales) and typically lays soft-shelled eggs on land

---

**SPECIES:** A group of plants or animals that have similar characteristics and that can breed with one another

---

**THREATENED:** An animal or plant at risk of becoming endangered

---

**WETLAND:** Land that is saturated with water such as marshes and swamps

## STEWARD SPONSOR

ELEGANT ISLAND  
LIVING

## PARTNER SPONSORS

Morgan Stanley

JOHN ROSE  
GLENN FERRELL  
FINANCIAL ADVISORS

**Parker's**



## ADVOCATE SPONSORS



**COLUMBIAD**  
CAPITAL ADVISORS

PARTNERS IN YOUR STRATEGIC JOURNEY

**GILBERT HARRELL**

GILBERT, HARRELL, SUMERFORD & MARTIN, PC



**MARSHLAND**  
CREDIT UNION



**SEASIDE**  
ELECTRIC



**ST. SIMONS**  
BANK & TRUST

## SUPPORT SPONSORS

93.7  
The Bridge

Ameris  
Bank

Beachview  
Events

BeSeen  
Outdoors

Brunswick-Golden Isles  
Chamber of Commerce

Chick-fil-A  
Saint Simons

Rebecca Strother  
Duckworth Properties

Kari & John  
Dunn

Edward Jones  
Jones Wealth  
Management Group

Gavin Sellers  
Creative

Georgia  
Power

J.C.  
STROTHER CO.

One Love  
Organics

Rich  
Products

South Coast  
Bank

Southeastern  
Bank

The Torras  
Foundation

Yancey  
Bros. Co

The mission of the St. Simons Land Trust is to preserve the island's natural and scenic character and to enhance the quality of life for present and future generations.



*Thank you to all those who helped to envision, create, review, and provide input on the Passport to Preservation, including Land Trust Ambassadors, Cannon's Point Preserve Education Task Force members, local educators and students, and our generous sponsors.*

1810 Frederica Road  
St. Simons Island, GA 31522  
(912) 638-9109 · [sslt.org](http://sslt.org)

